

# FELINE ASTHMA AND CANINE BRONCHITIS TREATMENT PATH & DOSING GUIDELINES



1 Treat Exacerbation!	2 Gain Airway Control	3 Transition to Inhalers	4 Daily Management																																	
<p><b>Ensure animal can breathe</b></p> <ul style="list-style-type: none"> <li>Immediate dilation of airways to provide respiratory relief</li> <li>Provide injectable steroid and either inhaled or injectable bronchodilator</li> <li>Injections administered in clinic/hospital</li> <li>Inhaled bronchodilator may be administered in clinic or at home by owner</li> </ul>	<p><b>Clear the airways</b></p> <ul style="list-style-type: none"> <li>Reduce airway inflammation and regain control of airways</li> <li>Provide short term course of systemic steroids</li> <li>10-day therapy course</li> </ul>	<p><b>Introduce Inhaled Therapy</b></p> <ul style="list-style-type: none"> <li>Taper systemic steroids while introducing inhaled steroids</li> <li>Overlap therapy for 2 weeks</li> <li>Inhaled steroids effectively target the airways for disease control without the side effects of systemic steroids</li> </ul>	<p><b>Maintain disease control</b></p> <ul style="list-style-type: none"> <li>Maintenance therapy to keep inflammation controlled and prevent exacerbations</li> <li>Daily therapy for symptom management</li> <li>Cat owners can administer inhaled bronchodilator during flare ups from exposure to triggers</li> </ul>																																	
<p><b>MEDICATIONS</b></p>	<p><b>MEDICATIONS</b></p>	<p><b>MEDICATIONS</b></p>	<p><b>MEDICATIONS</b></p>																																	
<p>Dexamethasone AND Terbutaline OR Albuterol</p>	<p>Prednisone / Prednisolone</p>	<p>Fluticasone OR Fluticasone + salmeterol</p>	<p>Fluticasone OR Fluticasone + salmeterol AND Albuterol</p>																																	
<p><b>Dosing Guideline</b></p> <table border="1"> <tr> <td>Dexamethasone</td> <td>0.1–0.5 mg/kg IM or IV</td> </tr> <tr> <td>Terbutaline</td> <td>0.01 mg/kg IM or SC</td> </tr> <tr> <td>Albuterol / salbutamol</td> <td>1–2 puffs, every 30 minutes for ≤4–5 hours</td> </tr> </table> <p><b>Notes</b></p> <ul style="list-style-type: none"> <li>Owners unable to regain control at home should bring animal to veterinary care</li> </ul>	Dexamethasone	0.1–0.5 mg/kg IM or IV	Terbutaline	0.01 mg/kg IM or SC	Albuterol / salbutamol	1–2 puffs, every 30 minutes for ≤4–5 hours	<table border="1"> <thead> <tr> <th>Dosing Guideline</th> <th>Cats</th> <th>Dogs</th> </tr> </thead> <tbody> <tr> <td>Prednisolone</td> <td>1.0–2.0 mg/kg every 24 hours</td> <td></td> </tr> <tr> <td>Prednisone</td> <td></td> <td>0.5–1.0 mg/kg every 24 hours</td> </tr> </tbody> </table> <p><b>Notes</b></p> <ul style="list-style-type: none"> <li>Review environmental modifications</li> <li>Ensure pet owners understand systemic steroids are only temporary</li> <li>Owners already using inhalers who treated exacerbation with albuterol can continue with inhaled steroid</li> </ul>	Dosing Guideline	Cats	Dogs	Prednisolone	1.0–2.0 mg/kg every 24 hours		Prednisone		0.5–1.0 mg/kg every 24 hours	<table border="1"> <thead> <tr> <th>Dosing Guideline</th> <th>Cats &amp; Dogs ≤20 kg (44.1 lb)</th> <th>Dogs &gt;20 kg (44.1 lb)</th> </tr> </thead> <tbody> <tr> <td>Fluticasone<sup>‡</sup></td> <td>1 puff 110 µg every 12 hours</td> <td>1 puff 220 µg every 12 hours</td> </tr> <tr> <td>Fluticasone + salmeterol</td> <td>1 puff 115 µg / 21 µg every 12 hours</td> <td>1 puff 230 µg / 21 µg every 12 hours</td> </tr> </tbody> </table> <p><sup>‡</sup> Cats with more serious disease may require 220 µg every 12 hours</p> <p><b>Notes</b></p> <ul style="list-style-type: none"> <li>Inhaled steroids can take 2-weeks to take effect</li> </ul>	Dosing Guideline	Cats & Dogs ≤20 kg (44.1 lb)	Dogs >20 kg (44.1 lb)	Fluticasone <sup>‡</sup>	1 puff 110 µg every 12 hours	1 puff 220 µg every 12 hours	Fluticasone + salmeterol	1 puff 115 µg / 21 µg every 12 hours	1 puff 230 µg / 21 µg every 12 hours	<table border="1"> <thead> <tr> <th>Dosing Guideline</th> <th>Cats &amp; Dogs ≤20 kg (44.1 lb)</th> <th>Dogs &gt;20 kg (44.1 lb)</th> </tr> </thead> <tbody> <tr> <td>Fluticasone<sup>‡</sup></td> <td>1 puff 110 µg every 12 hours</td> <td>1 puff 220 µg every 12 hours</td> </tr> <tr> <td>Fluticasone + salmeterol</td> <td>1 puff 115 µg / 21 µg every 12 hours</td> <td>1 puff 230 µg / 21 µg every 12 hours</td> </tr> </tbody> </table> <p>Albuterol / salbutamol 1–2 puffs as needed (cats)</p> <p><sup>‡</sup> Cats with more serious disease may require 220 µg every 12 hours</p> <p><b>Notes</b></p> <ul style="list-style-type: none"> <li>Albuterol is a rescue medication and should not be used as mono therapy</li> <li>Canines not shown to bronchoconstrict. Little evidence albuterol is effective for canine bronchitis</li> </ul>	Dosing Guideline	Cats & Dogs ≤20 kg (44.1 lb)	Dogs >20 kg (44.1 lb)	Fluticasone <sup>‡</sup>	1 puff 110 µg every 12 hours	1 puff 220 µg every 12 hours	Fluticasone + salmeterol	1 puff 115 µg / 21 µg every 12 hours	1 puff 230 µg / 21 µg every 12 hours
Dexamethasone	0.1–0.5 mg/kg IM or IV																																			
Terbutaline	0.01 mg/kg IM or SC																																			
Albuterol / salbutamol	1–2 puffs, every 30 minutes for ≤4–5 hours																																			
Dosing Guideline	Cats	Dogs																																		
Prednisolone	1.0–2.0 mg/kg every 24 hours																																			
Prednisone		0.5–1.0 mg/kg every 24 hours																																		
Dosing Guideline	Cats & Dogs ≤20 kg (44.1 lb)	Dogs >20 kg (44.1 lb)																																		
Fluticasone <sup>‡</sup>	1 puff 110 µg every 12 hours	1 puff 220 µg every 12 hours																																		
Fluticasone + salmeterol	1 puff 115 µg / 21 µg every 12 hours	1 puff 230 µg / 21 µg every 12 hours																																		
Dosing Guideline	Cats & Dogs ≤20 kg (44.1 lb)	Dogs >20 kg (44.1 lb)																																		
Fluticasone <sup>‡</sup>	1 puff 110 µg every 12 hours	1 puff 220 µg every 12 hours																																		
Fluticasone + salmeterol	1 puff 115 µg / 21 µg every 12 hours	1 puff 230 µg / 21 µg every 12 hours																																		



**Inhaled Medications**  
Learn more, plus where available.  
[TrudellAnimalHealth.com/inhalers](https://TrudellAnimalHealth.com/inhalers)





# Easy to Train - Only 4–6 Days of Training for a Lifetime of Safer Therapy<sup>1</sup>



## CONDITION

Slowly and calmly familiarize your pet to the chamber before administering a dose.



## LOVE

Provide lots of hugs, pets and cuddles before, during and after treatment.



## REWARD

Give treats before and after.

### Go Slow

- Give your pet time to get used to the chamber before trying to administer medication.
- Lay the device on the ground and allow them to approach on their own terms.
- Allow a day or more for each step of training.

### Build Comfort and a Create a Positive Link

- As their comfort increases start holding the chamber out at a distance. Give them a chance to sniff and smell it while holding the chamber still.
- Create a positive link to the chamber by providing lots of treats, hugs, and play when they approach.
- Associate this positive response to the chamber by halting play and hiding the chamber behind your back. Bring it back out and renew the treats, hugs, and play.
- Once comfort is established, gently apply the mask for a short time without delivering any medication. Continue to praise and treat. Repeat and slowly build up time.

### Develop Confidence

- Place the chamber in your lap and call them to you.
- Leave a trail of treats leading to your lap to entice them.
- Wipe a little tuna fish or peanut butter inside the mask to encourage use.
- Swaddling in a towel or blanket may help some cats.
- Reward and praise as you go.



**Teach Any Cat  
AeroKat<sup>®</sup> Chamber**

Train any cat step-by-step with videos from an ASAB-accredited Certified Animal Behaviorist.

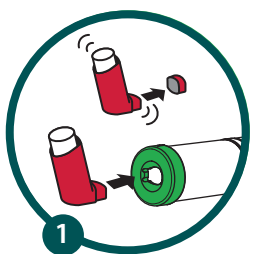




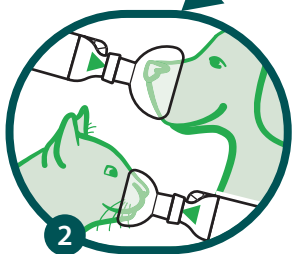
[TrudellAnimalHealth.com/TeachAnyCat](https://TrudellAnimalHealth.com/TeachAnyCat)



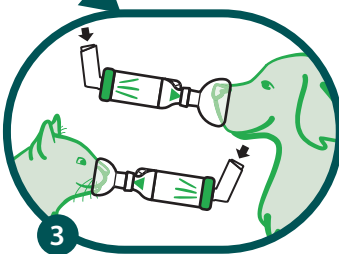
## Easy to Use



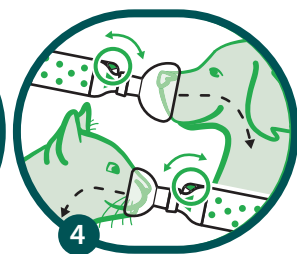
1 Shake inhaler and insert into back of chamber.



2 Gently apply the mask so that it covers the nose and mouth but not the eyes.



3 Press the inhaler.



4 Watch the *Flow-Vu*<sup>®</sup> indicator and count 7–10 breaths.



Steps 2 and 3 can be switched in order to prevent startling. Only recommended with the *AeroKat*<sup>®</sup>, *AeroDawg*<sup>®</sup> or *AeroHippus*<sup>®</sup> chambers, which are designed to hold the medication longer.<sup>2</sup>

Videos available at:  
[TrudellAnimalHealth.com/Resources](https://TrudellAnimalHealth.com/Resources)

### Tips on Using the Inhaler

- Inhalers that have not been used recently may need to be primed again. Check the instructions for your specific inhaler.
- The chamber fits round **and** oval metered dose inhalers.
- Make sure to remove any caps on the inhaler before use.
- Remove the inhaler between treatments.

### Tips on Administering the Medication

- The mask should cover the nose and mouth and not the eyes.
- Ensure the nose is covered for pets with large snouts.
- *Flow-Vu*<sup>®</sup> indicator movement confirms a good face to mask seal.
- Count breaths for assurance of medication delivery by validating that the required breaths were taken to empty the chamber of medication, regardless of erratic breathing or breath holding.
- Count a breath each time the *Flow-Vu*<sup>®</sup> indicator moves or flutters.
- If prescribed, wait 30s before reshaking and puffing the next dose.
- Use a damp cloth to remove medication residue on fur or hair.

1. Sartori S. Time to Acceptance of Aerosol Delivery Chamber in Healthy Dogs and Cats. BSAVA. 2021. 2. Rozanski EA. Impact of Spacer Design on Respiratory Drug Delivery and Potential Drug Cost Implications. ACVIM. 2020